



**SCIENCE GALLERY INTERNATIONAL ANNUAL REVIEW**  
**01.01.19–31.12.19**

THE SCIENCE GALLERY NETWORK IS PIONEERED BY TRINITY COLLEGE DUBLIN

© SCIENCE GALLERY INTERNATIONAL 2020. SCIENCE GALLERY INTERNATIONAL IS A CHARITY REGISTERED IN IRELAND (CHY 20125), WITH REGISTERED OFFICES AT 22 TEMPLE LANE SOUTH, DUBLIN 2, IRELAND. OUR VAT NUMBER IS IE 9829566E, AND OUR COMPANY REGISTRATION NUMBER IS 511842.

# 2020

|      |                               |    |
|------|-------------------------------|----|
| 01 — | INTRODUCTION                  | 02 |
| 02 — | OUR MISSION                   | 04 |
| 03 — | THE NETWORK                   | 06 |
| 04 — | SCIENCE GALLERY DUBLIN        | 08 |
| 05 — | SCIENCE GALLERY LONDON        | 10 |
| 06 — | SCIENCE GALLERY MELBOURNE     | 12 |
| 07 — | SCIENCE GALLERY BENGALURU     | 14 |
| 08 — | SCIENCE GALLERY VENICE        | 16 |
| 09 — | SCIENCE GALLERY DETROIT       | 18 |
| 10 — | SCIENCE GALLERY ROTTERDAM     | 20 |
| 11 — | SCIENCE GALLERY ATLANTA       | 22 |
| 12 — | SCIENCE GALLERY INTERNATIONAL | 24 |
| 13 — | TOURING                       | 26 |
| 14 — | GOVERNANCE AND STAFFING       | 28 |
| 15 — | FINANCIALS                    | 30 |

# 01 — INTRODUCTION

Opening a new Science Gallery is a manifestation of the capacity, innovation and vision of the university supporting it. With each new gallery the activity within the Science Gallery Network grows exponentially, enabling joint projects, increased connectivity and shared resources across the world. When a university joins the Network we are not simply adding a new member; we transform, update and re-shape how we work.

The year 2019 was bookended by two milestone moments: in January, the announcement of Science Gallery Rotterdam at Erasmus Medical Center; and in December, the agreement with Emory University to proceed in 2020 with Science Gallery Atlanta.

During the 12 months in between these two major achievements, we reached new heights of network activity leveraging the capacity of the Network as never before. We celebrated over 6 million total visitors to our exhibitions globally; 1,434 submissions to the five calls opened during the year; the first member-to-member travelling exhibition from Melbourne to Dublin; the first all-Network director meeting in Rotterdam; the second edition of the Youth Symposium in London, with twice as many participants as the first one; and the launch of a student exchange program supported by the Erasmus+ program.

In the summer of 2019 for the first time there were four exhibitions concurrently open across the Network: Science Gallery Detroit, Melbourne, London and Dublin engaged their communities of young adults, researchers, artists and designers with cutting edge content and award winning programs, gaining an unprecedented coverage on local, international and online media.

A few months later Science Gallery Bengaluru opened SUBMERGE, its first full scale exhibition exploring water, a topic of paramount significance locally and globally addressed also in the exhibition DEPTH in Detroit and the artist in residence programme in Venice.

In 2019 we also welcomed Neal Hartman as director of Science Gallery Venice. With a background spanning from CERN to TED Global to the World VR Forum, Neal brings incredible experience and vision and joins the leadership team of the Network.

The Science Gallery Network is of course much more than 8 galleries; it is over 140 people working at its 8 member universities; hundreds of international collaborators, partners and advisors; thousands of artists, scientists, researchers and designers whose work is part of acclaimed programmes onsite and online; and all the communities and audiences who visit, participate and shape the activities of each gallery. At Science Gallery International we develop and manage the systems, platforms and tools to enable our member universities to work seamlessly within this complex network of people, institutions and relationships. Part of this work is sharing the know-how of Science Gallery across all teams: in 2019 we developed 24 modules of self training on all aspects of running a gallery, from programme development to art handling to marketing and data protection. Over 200 module lessons were completed across all member locations. We also re-designed the websites for all locations, and engaged with a number of universities in Asia, Latin America and Europe to ensure the future development of the Network. We built an excellent foundation convening the key communities of Science Gallery – mediators and youth advisors, staff and directors – creating a collaborative ethos which continues, and is in fact stronger, during the covid-19 pandemic which affects us today. In 2019 we also initiated a global initiative to refresh the brand of Science Gallery, managing a strategic research with the key stakeholders of the network.

As we learn to navigate the reality of a post-pandemic world, we look back at 2019 with deep gratitude to our university members who make the Network possible, and we extend a special thank you to the Cordover family foundation which has supported Science Gallery through many years. The visionary and brave role of Trinity College Dublin, which founded Science Gallery in 2008, is our source of inspiration and pride, and we are grateful for the support it continues to give us.

To all our supporters and communities, thank you for another successful year together, and we hope you'll enjoy this annual review.

**Dr Andrea Bandelli**  
Executive Director,  
Science Gallery International



**Dr Patrick Prendergast**  
Chair,  
Science Gallery International Board



## THE SCIENCE GALLERY MISSION IS TO IGNITE CREATIVITY AND DISCOVERY WHERE SCIENCE AND ART COLLIDE

Science Gallery is creating a world where science and art collide by encouraging people to cross disciplinary boundaries — unleashing their imagination, enabling them to reach their full creative potential, and ultimately, inspiring the next generation of curious minds.

Science Gallery International is the non-profit, charitable organisation catalysing the growth of the Science Gallery Network. With the ongoing development of the network, Science Gallery International's role of supporting university members and sharing learning has never been more crucial. SGI enables member universities to achieve their strategic goals, and ensure that Science Gallery benefits the university at large.

Science Gallery International was established in 2012 with the founding goal of establishing a Science Gallery Network with eight nodes by 2020, based on the success of Science Gallery Dublin at Trinity College Dublin, the University of Dublin. Governed by a voluntary board, and led by Executive Director Dr. Andrea Bandelli, the Science Gallery International team is based in Dublin, Ireland.

### The role of SGI in achieving the Science Gallery mission is to:

#### Catalyse the growth of the Science Gallery Network

— Supporting initial gallery development, programming, planning, marketing and fundraising for the Science Gallery Network. This thriving network comprises eight Science Gallery locations worldwide in partnership with leading universities in key urban centres and further galleries planned to continue to inspire millions of minds every year.

#### Share the learnings across the Network

— Science Gallery International creates and manages the tools and resources, state of the art technology, digital platforms, intellectual property, unique learning and knowledge exchange, peer support, staff training and mentoring, mobility programmes and much more for all Network members.

#### Tour Science Gallery exhibitions

— Touring inspirational exhibitions, events and experiences from the Science Gallery Network globally, from San Diego to Taiwan, to arts, cultural and science centres, and to the members of the Science Gallery Network.

# 6,000,000

— We celebrated over 6 million total  
visitors to our exhibitions globally



The rapid growth of the Science Gallery Network across four continents is testament to its success, and Network expansion remained a priority in 2019.

With the ongoing development of the Network, Science Gallery International's remit to catalyse growth, and to share learning across the Network has never been more crucial. Science Gallery International creates and manages tools and resources, technology, digital platforms, intellectual property, unique learning and knowledge exchange, peer support—and much more for our Network members.

Science Gallery International enables a global learning experience for university faculty, students, researchers, and the local community. These tools and initiatives enable member universities to achieve their strategic goals, and ensure that Science Gallery benefits the university generally.

In January of 2019 Science Gallery International was delighted to welcome the seventh member of the Science Gallery Network: Science Gallery Rotterdam at Erasmus University Medical Center — one of Europe's premiere medical schools. In January 2020, based on work done throughout 2019, it was announced that Atlanta-based Emory University—one of the world's leading research universities—will become the latest member of the Network. This development delivers on our 'Eight by 2020' goal, further expanding the Network's global reach. This achievement demonstrates the international appetite for the Science Gallery concept, in which science and the humanities work together.

*“At Emory, we believe in harnessing our teaching and research excellence to kindle critical thinking and address global challenges. That's what Science Gallery is all about. We view this gallery as a place where creativity, scholarship, and service can come together to help make a brighter future for all.”*

— Claire E. Sterk, President of Emory University

# 1,434

— submissions to the five calls opened during the year

# 140

— people working at its 8 member locations



— two milestone moments: in January, the announcement of Science Gallery Rotterdam at Erasmus Medical Center; and in December, the agreement with Emory University to proceed in 2020 with Science Gallery Atlanta.



— the second edition of the Youth Symposium in London, with twice as many participants as the first one

LONDON

ROTTERDAM

— the first all-Network director meeting in Rotterdam



— The launch of a student exchange program supported by the Erasmus+ program.



**How can science be more open? Why do humans strive for perfection? What does the future hold for plastic? In 2019, Science Gallery Dublin asked questions that explored our relationship with the scientific process, ourselves, and our environment.**



**Trinity College Dublin**  
Coláiste na Tríonóide, Baile Átha Cliath  
The University of Dublin

**Visitors in 2019:**  
350,009

In 2019, Science Gallery Dublin continued to experiment with new exhibition formats and new approaches to exploring themes our audiences value. The gallery invited visitors to become part of the research process in OPEN LABS — where they explored the expanding potential of citizen science. Part exhibition, part experiment, OPEN LABS showcased DIY culture across design, research, technology, and activism. It invited visitors to take part in, and help shape, the scientific process. OPEN LABS also explored the potential for a scientific practice that is more open, democratic, and collaborative.

In May, Her Majesty Queen Silvia of Sweden visited Science Gallery Dublin — as part of a three-day state visit to Ireland. At the gallery, Queen Silvia took part in an OPEN MIND workshop with students from local secondary schools, aimed at finding solutions to mental health problems faced by young people.

PERFECTION was a creative collision of scientific experimentation and artistic expression. It held up the mirror of self-reflection, and invited visitors to see the benefits, and the problematic aspects, of the imperfect/perfect dichotomy. The aim of the exhibition was to leave visitors questioning their own interpretations of 'perfect'. PERFECTION was initially developed and exhibited at Science Gallery Melbourne, and this was the first Science Gallery Network exhibition to be adapted for Dublin.

With PLASTIC, the goal was to spark a conversation about an Earth-damaging material that we cannot live without. The team developed an exhibition and events programme to explore how we can responsibly use this versatile material — while fundamentally changing our approach to living with, and using, plastic. This was the first Science Gallery exhibition planned to tour nationally; which will bring Science Gallery Dublin to new audiences in Wexford, Drogheda, Galway and Letterkenny.

**Biometric Mirror – asked whether we trust algorithms to make judgements about us based on our appearance (Lucy McRae and Niels Wouters)**



**In 2019, Science Gallery London continued to showcase collaborations between King's researchers, artists and young adults on its mission to connect art, science and health to drive innovation in the heart of the city.**

In February, SPARE PARTS launched. From couture tissue-engineering and growing replacement body parts, to personal stories of organ transplantation and more, SPARE PARTS invited visitors to discover what the future of medical engineering might mean for us all in the future.

In June, DARK MATTER delved into one of the biggest mysteries in physics today, and looked at what makes up our Universe. Imagining the unseen, and questioning the invisible, DARK MATTER explored matter and materiality, the concept of invisibility and infinite divisibility, and the human quest for absolute truth and knowledge.

The 2nd Annual Science Gallery Youth Symposium was hosted by Science Gallery London in July; it brought young people from Dublin, London, Detroit, and Venice together. The symposium included creativity bingo, sensory storytelling, and even participatory rap—but most importantly, had young people from across the Science Gallery Network meeting, thinking, and co-creating.

ON EDGE launched in September, and sparked conversations around the causes of and responses to anxiety today through art, design, psychology, and neuroscience. It explored the connections between an individual's experience of anxiety, and how society frames those experiences.

In November, Science Gallery London won an award for best refurbishment at the 2019 Architects' Journal Architectural Awards. The refurbishment of an 18th Century building on the Guy's Campus of King's College London was recognised for its stunning sustainable design and for demonstrating exceptional collaboration.



**Visitors in 2019:**  
98,936

*Biometric Mirror – asked whether we trust algorithms to make judgements about us based on our appearance (Lucy McRae and Niels Wouters)*



**Science Gallery Melbourne  
reimagined our waste and lifted  
the lid on human wastefulness.**

In 2019, Science Gallery Melbourne highlighted experimental and creative ways to tackle our ever-growing excess of waste through transdisciplinary and collaborative practices in its third pop-up programme: DISPOSABLE. The exhibition used installations, experiments, and events across Melbourne to explore creative responses to the global waste problem. From urine-powered phone batteries, to soaps made from the sewer, visitors made friends with 12,000 polystyrene-eating mealworms, and a trash-eating robot.

Science Gallery Melbourne’s previous exhibition, PERFECTION, took on new life in Dublin, as it travelled across the world to delight Irish audiences. From dog shows, to genetic engineering, mathematical precision, Brazilian waxing and robot companions, the programme explored society’s fascination with striving for the unattainable.

Work continued on the University of Melbourne’s new innovation precinct, Melbourne Connect. The precinct will be home to Science Gallery Melbourne, and provide an environment where great minds from different disciplines collide to turn big ideas into pioneering products or services, particularly in relation to changing technologies, sustainability and resilience.

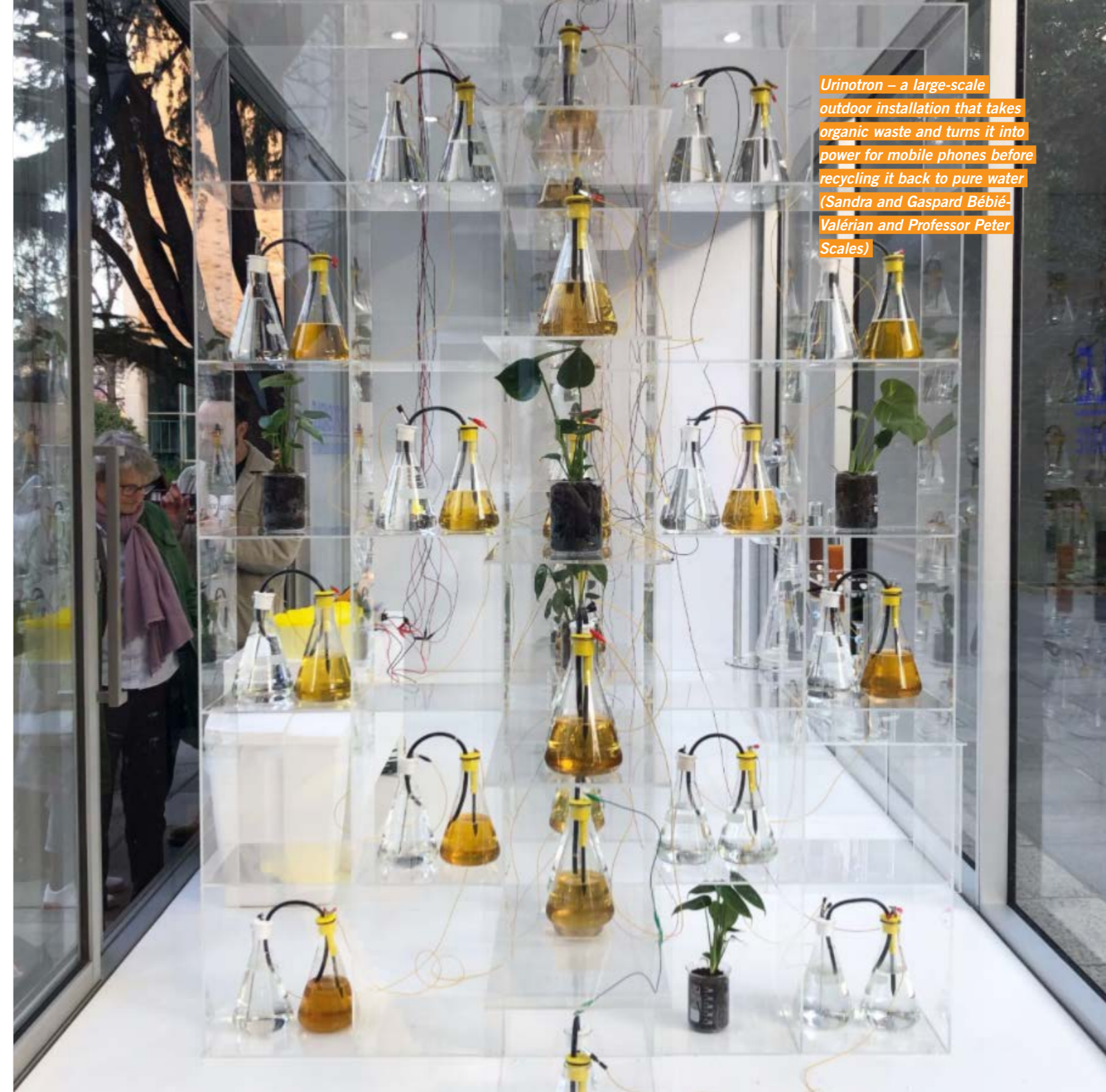
*“It’s an amazing opportunity for the University and other education institutions to learn from young people; what makes them want to be challenged by ideas outside of their normal learning frames? What does a professional learning community of young people look like?”*

— Dr. Kathryn Coleman, University of Melbourne



THE UNIVERSITY OF  
MELBOURNE

Visitors in 2019:  
23,000



Urinotron – a large-scale outdoor installation that takes organic waste and turns it into power for mobile phones before recycling it back to pure water (Sandra and Gaspard Bébié-Valérián and Professor Peter Scales)



**2019 was a jam-packed year for Science Gallery Bengaluru with two pop-up exhibitions and construction work on the gallery progressing at a rapid pace.**

A partnership between the Indian Institute of Science as Lead Academic Partner, and the National Centre for Biological Sciences and Srishti School of Art, Design and Technology as Collaborating Partners, in 2018 Science Gallery Bengaluru finalised master plans and conceptual designs for their site, and in 2019 the construction work got underway in earnest. The site will be open to the public in 2022. It will house a Public Lab complex, Public Engagement Complex and Community Spaces.

In October, Science Gallery Bengaluru held a pop-up exhibition exploring chemistry, for the 150th anniversary of the Periodic Table—inspired by Dublin’s 2011 exhibition, ELEMENTS.

In December, Science Gallery Bengaluru’s first full-scale exhibition, SUBMERGE, in collaboration with the US-based Smithsonian Institution, showcased what could happen if geologists, hydrologists, artists, civil engineers, ecologists, social scientists, oceanographers, historians, and storytellers shared, and created, knowledge about water—to address current challenges and identify future ones.



*(Bengaluru, SUBMERGE)  
Diagenesis – A performance that immersed dehydrated stones into water with a hydrophone. The stones act like a sponge and absorb the water, creating unique sounds, not only becoming the ‘voice’ of the stones, but also a means of exploring the internal structure of the stone.*



**Engaging audiences through its pop-up activities in 2019, the gallery will open its doors in 2021 in San Basilio, an area of the port authority of Venice currently undergoing significant urban regeneration.**

Science Gallery Venice continued with their open call program, EARTH WATER SKY – a three-year artist in residency programme funded by the Didier and Martine Primat Foundation for artists interested in the environment and the latest in cutting edge environmental knowledge. The 2019 winner was Emma Critchley, UK underwater artist.

Science Gallery Venice held a pop-up exhibition exploring chemistry, for the 150th anniversary of the Periodic Table —inspired by Dublin’s 2011 exhibition, ELEMENTS.

The team at Science Gallery Venice spent much of 2019 preparing to exhibit ILLUSION in early 2020, one of Science Gallery Dublin’s most prolific touring shows.



Ca' Foscari  
University  
of Venice



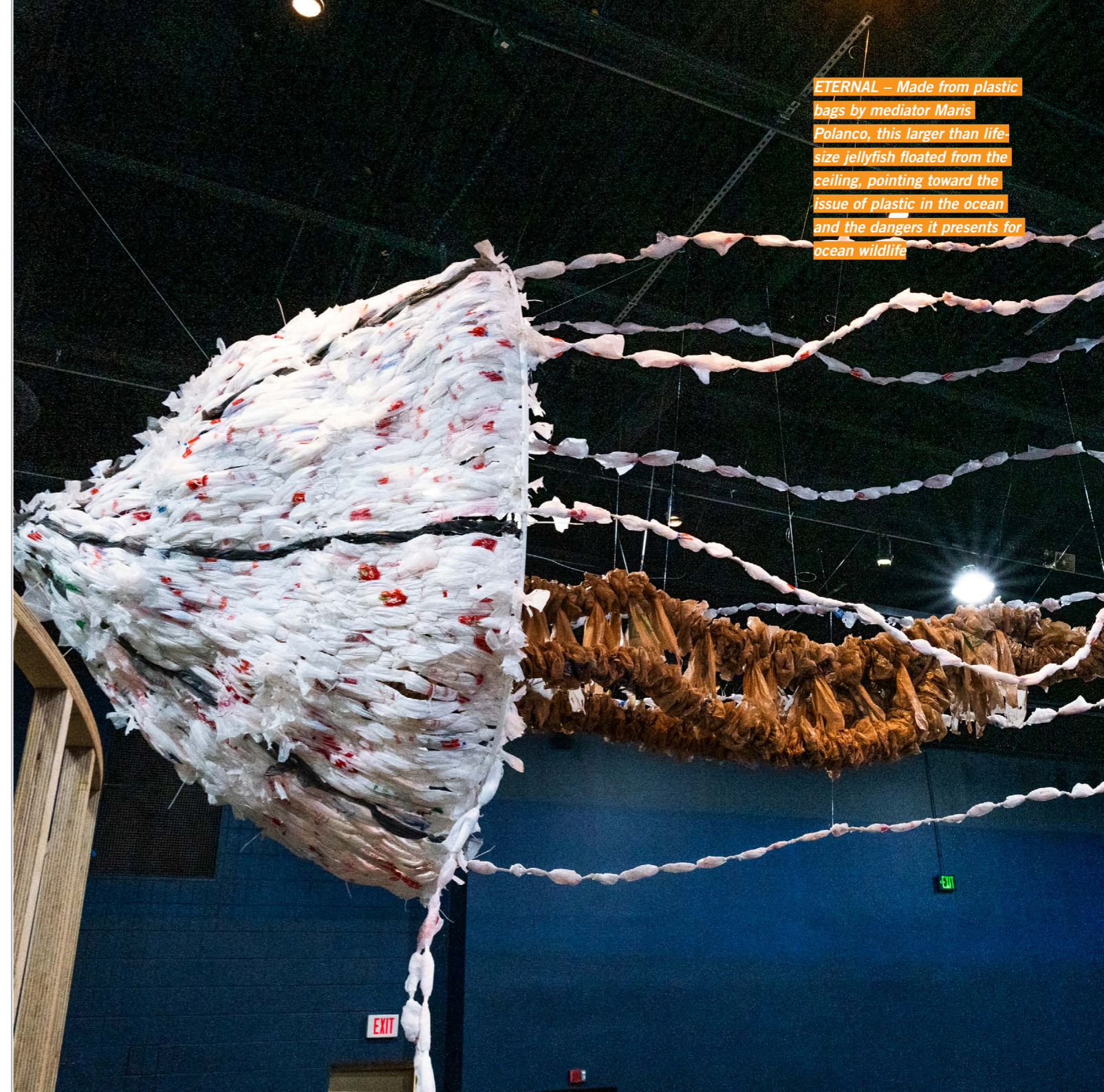
**Acting as a bridge between downtown Detroit and the Michigan State University campus, Science Gallery Detroit brought its second exhibition to life in 2019.**

DEPTH, the second Detroit exhibition, explored water's intense power — one that creates catastrophic storms and floods — while also showcasing the beauty and life it brings. It weaved a narrative, drawn from scientific research and artistic exploration that invited visitors to consider how we can value the power of water, understand why it brings us joy and life, stop our abuse of it, and wonder about the undiscovered and unknown.

Science Gallery Detroit hosted a myriad of events in 2018, including the second iteration of The Science of Grief, a 14-hour overnight, community conversation and performance on grief that was overwhelmingly well-received by those who partook in it. The event provided community members with the opportunity to share stories about grief they have experienced in front of a rotating silent audience. At fourteen hours, the event holds the record across the Network as the longest Science Gallery event.

*“Michigan State University believes that Science Gallery is one of the most important public engagement projects in the world...”*

— Jeff Grabill, Director of Science Gallery Detroit and MSU Associate Provost for Teaching, Learning and Technology  
Notes on imagery: DEPTH in the content pool



**ETERNAL** – Made from plastic bags by mediator Maris Polanco, this larger than life-size jellyfish floated from the ceiling, pointing toward the issue of plastic in the ocean and the dangers it presents for ocean wildlife

**Science Gallery Rotterdam brings together Erasmus MC's excellent academic research and outstanding medical practice with the thriving art and design scene in Rotterdam.**

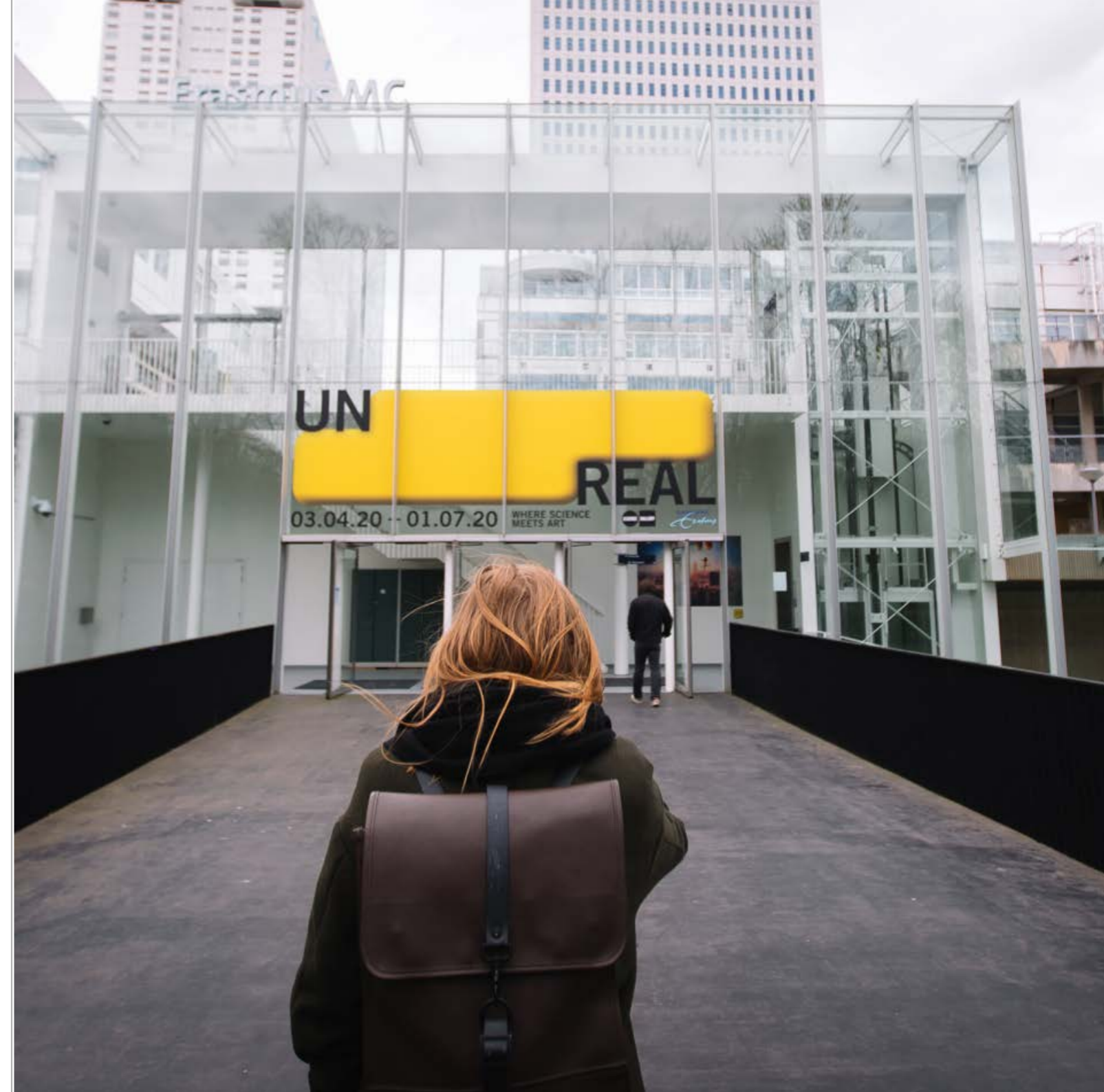
Science Gallery International announced that it will establish Science Gallery Rotterdam in partnership with Erasmus University Medical Center Rotterdam in January 2019. Set to start engaging audiences through pop-up activities from September 2019 on the Erasmus MC campus before opening its permanent site in the main building of the Medical Center, Science Gallery Rotterdam will create and host free exhibitions and events designed for a target audience of young adults from 15 to 25 years old.

The largest medical school in the Netherlands, bibliometric indicators place Erasmus MC in the top 20 in clinical medicine worldwide. Erasmus MC is committed to a healthy population and excellence in healthcare through research and education. Local partners of Erasmus MC and Science Gallery Rotterdam are the Centre for the Arts and Museum Rotterdam.

Science Gallery Rotterdam spent much of 2019 planning their first exhibition for spring of 2020, titled (UN)REAL, exploring biomedical research that uncovers the ways that our minds and senses produce gaps between the actual and the observed.

*“Science Gallery Rotterdam will connect excellent research of Erasmus MC with art and the local community. The exciting format of combining research with the imaginative power of art is a great way to present our scientific work to society and to strengthen our communication with local communities. This will bring the wonders of science to young people stimulating them to consider a career in science.”*

— Prof Hans (J.P.T.M.) van Leeuwen, Dean of Erasmus MC



**The announcement of our new alliance with Emory University delivers on our goal of eight partners by 2020, and sees the second Science Gallery location in the United State.**

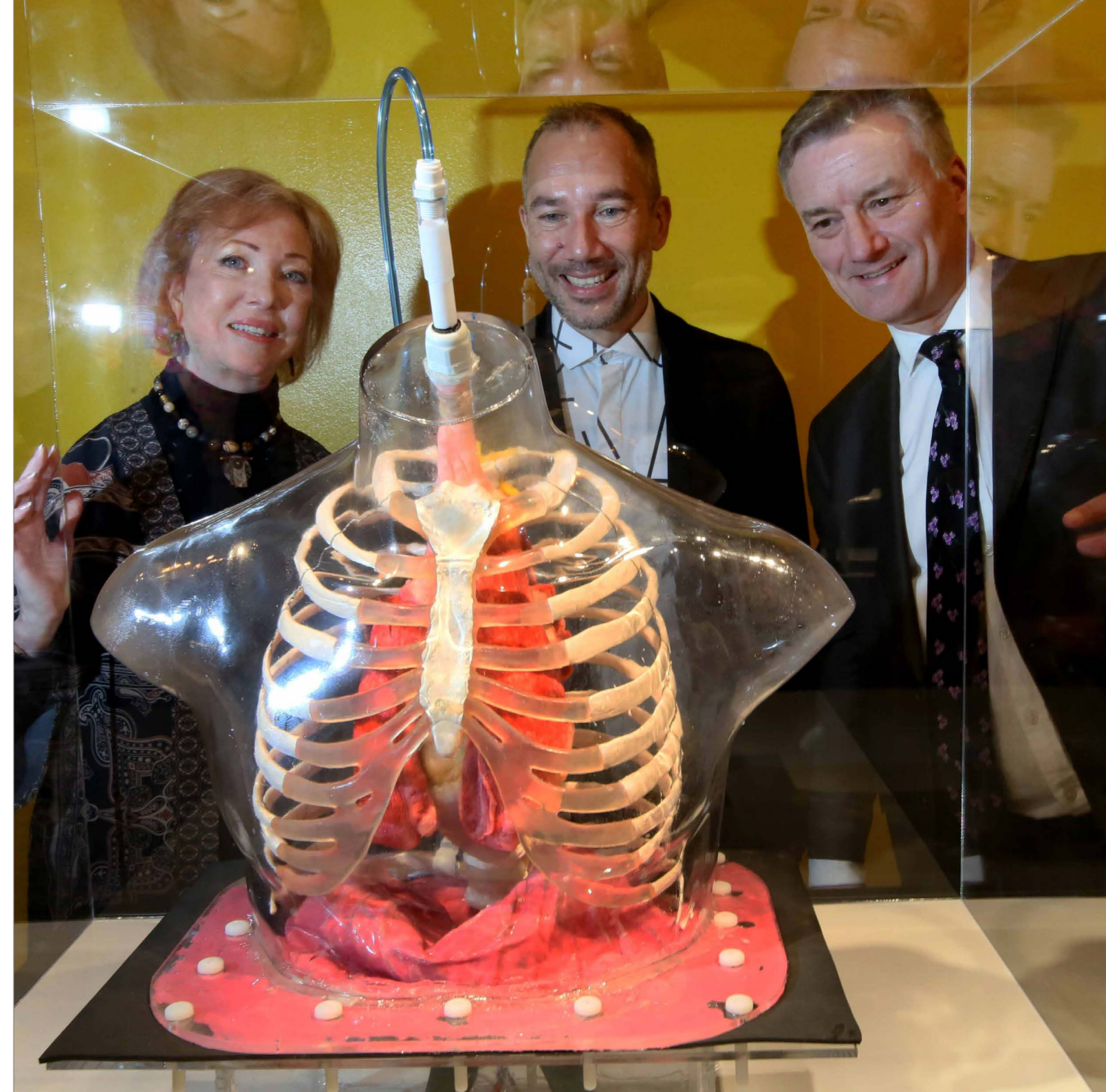
Atlanta-based Emory University, one of the world's leading research universities, will become the latest member of the Network. The announcement was made at a signing ceremony held in Trinity College Dublin in January 2020. The ceremony was attended by representatives of Trinity, including the Provost, Dr. Patrick Prendergast, and a visiting delegation from Emory University.

The signing demonstrates the international appetite for the Science Gallery concept, which was homegrown in Ireland and exported across the world.

Emory University have plans to exhibit HOOKED in 2021, an exhibition originally conceived by Science Gallery London exploring the nature of addiction

*“By bringing together the arts and sciences in ways that delight, clarify and stimulate, Science Gallery Atlanta will build our understanding of complex issues and yield better outcomes for our world in light of pressing global challenges. It will further Atlanta’s reputation as a destination for innovation in the arts and sciences.”*

— **Dr. Deborah W. Bruner, Senior Vice President for Research at Emory University**

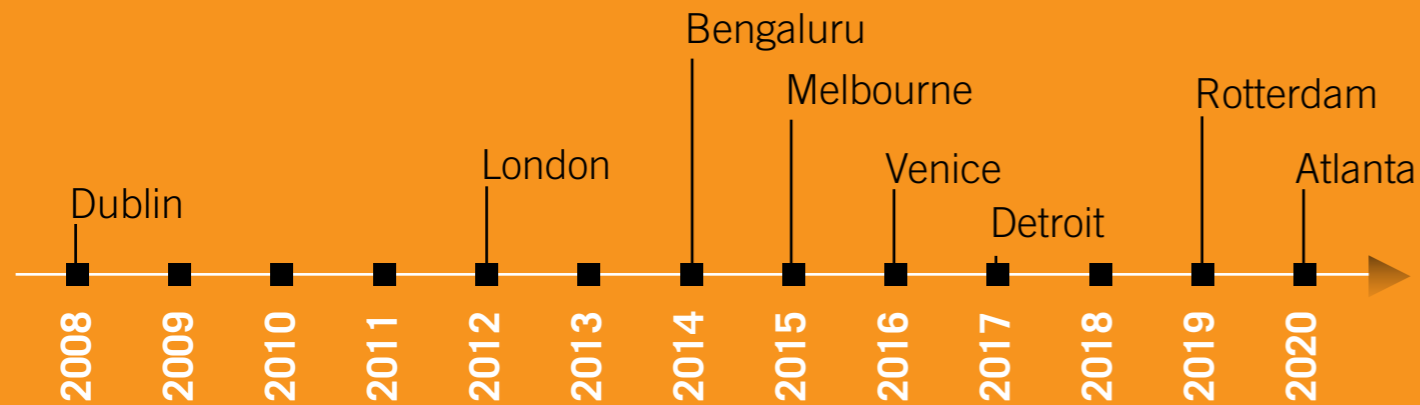


# 12 — SCIENCE GALLERY INTERNATIONAL

**Science Gallery International (SGI) is the non-profit, charitable organisation catalysing the growth of the network, providing services, tools and resources required to power and expand this unique global collaboration.**

# 183

— press articles mentioning Science Gallery



### Network Connectivity and Training

The 2nd Annual Science Gallery Youth Symposium was coordinated by SGI and hosted by Science Gallery London on Friday, 19 July bringing young people from Dublin, London, Detroit and Venice together – meeting, thinking, and co-creating. We've set a challenge to ourselves to embed as many of their ideas as we can into our programming.

The Directors' Forum, which includes the Directors of each Science Gallery location met in Rotterdam in September at the site of Science Gallery's newest member, Erasmus MC. Programme leads from each location were also in attendance, as this year's forum focused heavily on new models of programming and resource-sharing across the Network.

SGI launched its new learning platform for the network. ELEVATE was the Network's learning platform which allows staff members in all locations to access courses specifically tailored to their role, level of experience, and time spent with Science Gallery. ELEVATE includes learning journeys for new staff and new mediators, as well as more advanced modules on a variety of topics, like digital platforms, marketing, data protection and general Science Gallery information.

### Network Promotion and Representation

Our partnership with WEF continued with Science Gallery Melbourne's Biometric Mirror being presented at the Annual Meeting of the New Champions, Dalian China.

Andrea Bandelli and Katrina Enros attended the Times Higher Education Conference on Impact and Innovation in Daejeon, South Korea.

Katrina Enros presented at the British Council's Going Global 2019 Conference in Berlin.

### Diversity and Inclusion

SGI together with Wellcome, AAAS, CERN and several other organisations supported the second International Day of LGBT+ people in STEM, which was launched by groups Pride in STEM, House of STEM and InterEngineering, and celebrated on 5 July 2019.

### Press

It was another healthy year for the Network in national and international media. The Network was mentioned in prestigious publications such as New Scientist, Financial Times, Times Higher Education, The Guardian, BBC, Nature, and The Sunday Times. SGI gathers analytics on press coverage in CONNECT, and the insights highlight how there was four times more news coverage of the gallery locations outside Dublin in 2018 compared to 2017; a testament to the continuing growth of the Network. Each gallery location continues to emphasise both the Network and their member university as an integral part of their story, providing valuable global coverage for each university and each gallery location. In 2018 each gallery location received one-third more press mentions than 2017 due to coverage in an article about another member of the Network.

### Future Plans

Network expansion remains a priority in 2020. Emory University in Atlanta officially joined the Network in early 2020, with Science Gallery International attaining our original goal of 8 galleries by 2020. Conversations continue in Latin America, Asia and Europe.

SGI will continue to develop its various network engagement resources, with expansion of the rollout and upgrading of the Network's websites, digital platforms and brand, as well as training and induction of an expanded Network staff.

# 13 — TOURING

Since touring began, nine Science Gallery Dublin travelling exhibitions have toured to twenty-four venues all over the world, and have been visited by almost 1.8 million people. In 2019, 74,448 people visited Science Gallery touring shows. In 2019 the touring focus shifted to exhibition and IP sharing amongst the Network members, over external exhibition rental.

## SOUND CHECK

16.02.19 – 18.08.19

### **Scenkonst Museet, Stockholm**

It was the very first tour for Dublin's SOUND CHECK as it took up residence in the Swedish Museum of Performing Arts.

## ILLUSION

09.11.18–15.03.19

### **Puke Ariki, New Plymouth**

Fresh from its stint in China, ILLUSION headed straight over to New Zealand, where it arrived at Puke Ariki in New Plymouth to start its run into 2019.



# GOVERNANCE AND STAFFING

Science Gallery International are proud to count some of the world's most forward-looking and experienced minds in science, public engagement, technology, engineering and education amongst our board members.

Chris Horn stepped down from his role as Science Gallery International's Chair in January 2019. He was involved in the very earliest days of Science Gallery, first as Chair of the Fundraising Committee for a Science Gallery at Trinity in 2007, and then as Chair of its Advisory Committee from 2008-2011. He has been the Chair of Science Gallery International's Board since 2012, and helped to welcome all of the new Members to have joined the Network since. Alongside his many other personal and professional accomplishments, Chris has shaped the Science Gallery concept from a gallery to a network to a movement; we wish him the best of luck in all his future endeavours. Dr. Patrick Prendergast, Trinity's Provost, will serve as the Chair.

John Climax, Clare Matterson, and David Martin retired from the board. All three were involved in Science Gallery International from its earliest days, and helped shape the direction and ambition for the Network. Myra Garrett also retired from the board.

Mary Carty and Ken Arnold were appointed to the board for a three-year term. Ron Cordover was appointed for a second three-year term, and Deborah Bull was appointed for a third one-year term.

## OUR BOARD

### DR PATRICK PRENDERGAST (CHAIRMAN)

Provost, Trinity College Dublin

### KEN ARNOLD

Professor at Copenhagen University, Director of Medical Museion and Creative Director at Wellcome

### BARONESS DEBORAH BULL

Vice President & Vice-Principal (London), King's College London

### MARY CARTY

Cofounder Outbox Incubator and Strategic Advisor

### DR RON CORDOVER

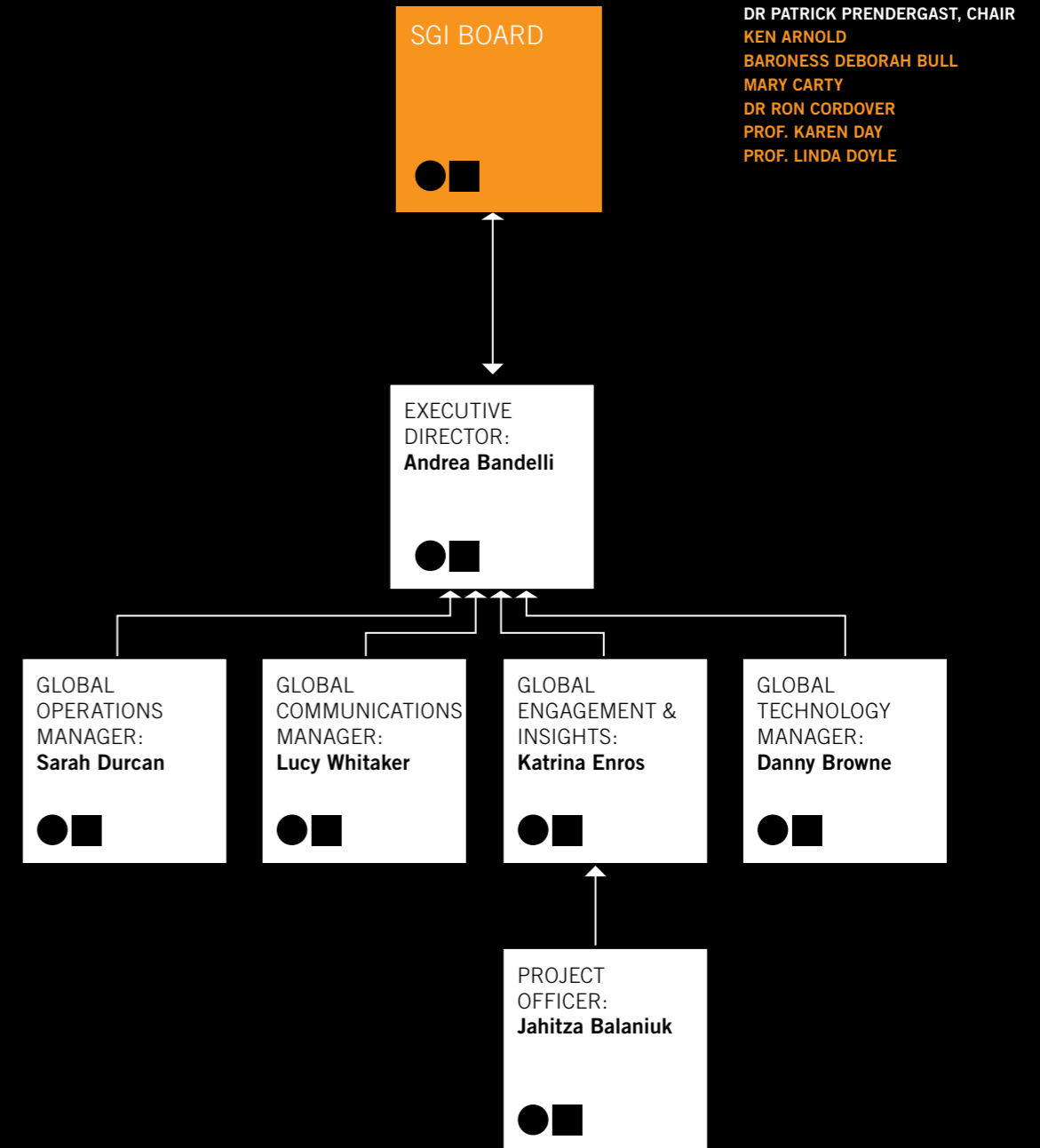
Chairman Emeritus, Corber Corporation

### PROF KAREN DAY

Dean of Science, The University of Melbourne

### PROF. LINDA DOYLE

Dean of Research, Trinity College Dublin





**1. FINANCIAL SUMMARY**

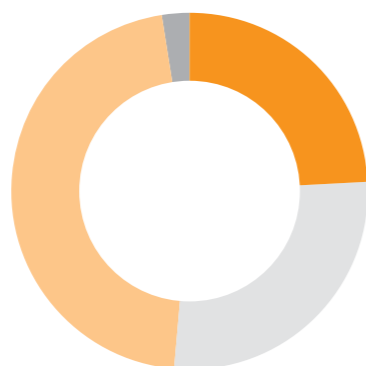
A financial summary is presented opposite.

SIG's earned income continued to surpass the amount of raised income in 2018/2019, with raised income accounting for 9% of all income, and earned at 91%. The (deficit)/surplus for the year after providing for depreciation amounted to €(2,604) (2018 deficit of €97,724). At the end of the financial year, the company retained a surplus of €137,170 (2018 €139,774).

With Emory University joining the Network, SIG has reached its goal of 8 members by 2020, and will be less reliant on raised income in future.

**SIG INCOME**

|                                   |                 |
|-----------------------------------|-----------------|
| Philanthropic / Grants            | €55,586         |
| Network Membership & Touring Fees | €575,422        |
| <b>TOTAL</b>                      | <b>€631,008</b> |

**SIG EXPENDITURE BY COST AREA**

|                    |                 |
|--------------------|-----------------|
| Operations         | €153,827        |
| Network Promotion  | €172,649        |
| Network Membership | €292,136        |
| Fundraising        | €0              |
| Touring            | €15,000         |
| <b>TOTAL</b>       | <b>€633,612</b> |

**Science Gallery International CLG****INCOME & EXPENDITURE for the year ended 30 Sept 2018 (€)**

|   | 2018    |       | 2018    |       |
|---|---------|-------|---------|-------|
| <b>INCOME</b>                           |         |       |         |       |
| Philanthropic/Grants                    | 55,586  | 8.8%  | 216,589 | 32.1% |
| Network Membership & Touring            | 575,422 | 91.2% | 458,939 | 67.9% |
| <b>Total Income</b>                     | 631,008 |       | 675,528 |       |
| <b>EXPENDITURE</b>                      |         |       |         |       |
| Operations                              | 153,827 | 19.9% | 168,587 | 21.8% |
| Network Promotion                       | 172,649 | 22.3% | 169,649 | 21.9% |
| Network Membership                      | 292,136 | 37.8% | 295,136 | 38.2% |
| Fundraising                             | 0       | 0.0%  | 48,840  | 6.3%  |
| Touring                                 | 15,000  | 1.9%  | 91,040  | 11.8% |
| <b>Total Department Expenditure</b>     | 633,612 |       | 773,252 |       |
| <b>Surplus/(deficit) for the year</b>   | -2,604  |       | -97,724 |       |
| <b>Retained surplus brought forward</b> | 139,774 |       | 237,498 |       |
| <b>Retained surplus carried forward</b> | 137,170 |       | 139,774 |       |



**JAHITZA BALANIUK**  
PROJECT OFFICER



**DR ANDREA BANDELLI**  
EXECUTIVE DIRECTOR



**DANNY BROWNE**  
GLOBAL TECHNOLOGY  
MANAGER



**SARAH DURCAN**  
GLOBAL OPERATIONS  
MANAGER



**KATRINA ENROS**  
GLOBAL ENGAGEMENT  
AND INSIGHTS



**LUCY WHITAKER**  
GLOBAL COMMUNICATIONS  
MANAGER

